

MASONROSE

Beaverbrook Town House, London



Beaverbrook Town House, London

KEY FACTS

From the team behind Surrey's Beaverbrook, and in partnership with Cadogan Estates, Beaverbrook Town House is a luxurious heritage hotel which opened on 30th August 2021 at the heart of Chelsea's historic Sloane Street with views of leafy-green Cadogan gardens.

Spanning 15,000 sq. ft., the hotel occupies two renovated Georgian townhouses featuring 14 rooms and suites. Each is named and inspired by a celebrated London theatre, reflecting Lord Beaverbrook's love of West End shows. Expect jewel-colours, four-poster and half-tester beds, antique bureaux and bedside tables, oak floors and bespoke rugs by Beaverbrook designer Nicola Harding, and opulent, theatre-style curtains, decorated with velvet geometric trims. Each room brims with carefully curated posters, illustrations, vintage photography, and bespoke written histories, seamlessly telling a theatre's fascinating story.

Sir Frank's Bar and The Fuji Grill pay homage to both Japan's exquisite cuisine and iconic 19th-century artwork.

Enjoy a delectable range of edible delicacies followed by your favourite tippie at the dazzling art-deco inspired bar. The 'Omikase experience' combines an overnight stay with an authentic 18 course dinner at the Fuji Grill's sushi bar, complete with a bottle of Laurent-Perrier Rose on arrival.

Beaverbrook Town House affectionately recreates a bygone era of hospitality combined with modern panache, charmingly decorated with antique treasures, vintage toys and saucy curios. Thoughtful touches like a snug little **Library** and personal assistants, minibars stocked with guests' preferred treats, help-yourself whisky decanters and tea stations, give this hotel the atmosphere of a private home.

Visitors benefit from exclusive access to the city's cultural scene, private-shopping experiences and in-room massage and beauty treatments. Guests can also book fitness classes at nearby KXU, or personal training sessions in the peace and privacy of Cadogan Place Gardens.

LOCATION AND ACCESS

Sloane Square station: 3 minute walk from the hotel

Heathrow Airport: approx 15.5 miles, 35 mins drive by car or 40-50 mins by train

London City Airport: 10.5 miles, 40 mins drive by car or 55 mins by train

Gatwick Airport: approx 35 miles, 1 hr & 15 mins drive by car or 50 mins by train

ACCOMMODATION

14 suites including:

Classic Rooms (The Lyceum, The Aldwych, The Royal Court, The Coliseum, Shakespeare's Globe): 26-31 sq.m, king-size bed, British sourced complimentary minibar, underfloor heating in bathroom, bath and separate walk-in showers, Bamford toiletries, Nespresso coffee machine and Cru cafe capsules, seating area

Deluxe Rooms (Drury Lane, The Criterion, The Palladium): 35-41 sq.m, king size bed, Sipsmith Sloe Gin, complimentary minibar, underfloor heating in bathroom, Bamford toiletries, Nespresso coffee machine

Studio Suite (Royal Opera House, The Old Vic, The Adelphi, The Garrick, The Savoy, The Haymarket): 35-41 sq.m, beautiful open plan suites with king size bed,

Sipsmith Sloe Gin, complimentary minibar, underfloor heating in bathroom, Bamford toiletries, Nespresso coffee machine

Executive Floor: a combination of three Studio Suites, one Deluxe Room and one Classic Room located on the first floor of the hotel

FACILITIES

The Fuji Grill and Omakase Sushi Bar: serve flawless sushi, sashimi and nigiri, alongside signature Beaverbrook dishes such as 'Charcoal' Wagyu with Juniper Miso. Dressed in a restful, soft green palette with original Japanese woodcut prints, the restaurant brings together a team hailing from Nobu, Roka and Annabels. Guests can savour modern Japanese gourmet specialities with the seasonal tasting menu.

Sir Frank's Bar: an elegant art deco bar serving a collection of creative cocktails courtesy of Alan Cook,

Beaverbrook's much-loved Bar Manager. Glossy lacquered walls, burnt-umber and berry-bright stained glass marry raspberry-pink seating and leather-lined booths. The remarkable atmosphere is enhanced by tables decorated with a patchwork of Japanese matchbox covers, which augment the stunning and extensive 19th-century Japanese woodcut prints.

In-room massage and beauty treatments can be booked and residents can participate in fitness classes at the nearby KXU gym or have a personal training session in the privacy of the gardens opposite of the hotel.

PRIVATE ROOMS

The Butterfly Room: An exceptional venue and an elegant private space that provides a remarkable backdrop for a high-grade business event or celebratory dinner. With its prime location on stylish Sloane Street and exclusive use of a pretty perfumed garden, the Private Dining Room is a stunning event space for drinks receptions and a sit-down meal of superlative Japanese cuisine for up to 12 people. The room is named after the hotel's collection of

exquisite Japanese butterfly prints, mounted on long, lacquered foxed mirror frames.

The Town House offers tempting day delegate rates for corporate meetings, which include room hire, refreshments, lunch, full use of the AV facilities/Fibre WiFi. In addition, guests can book a special 24-hour rate to include dinner, overnight accommodation and breakfast.

DID YOU KNOW?

The Town House is home to a unique range of art collections and a myriad of historic and whimsical treasures created and curated by Beaverbrook's creative director, Sir Frank Lowe. Over 500 works are tastefully showcased, including Japan's great masters, bespoke historic theatre memorabilia and quirky vintage images of London's best-loved tourist attractions.

A kingmaker, powerbroker (and sometime mischief-

maker), Lord Beaverbrook was a consummate politician, publicist of boundless energy, and great friend of Winston Churchill. His newspapers, the Daily Express and Sunday Express, could make or break almost anyone, and he hosted world leaders, literary greats and Hollywood stars in flamboyant style at his country abode nestled in the heart of the picturesque Surrey Hills. Beaverbrook, Surrey rekindles the spirit of this bygone era of English high society at its most charismatic, whilst the Town House reimagines Lord Beaverbrook's colourful life in London.



Studio Suite



The Fuji Grill



Classic Room



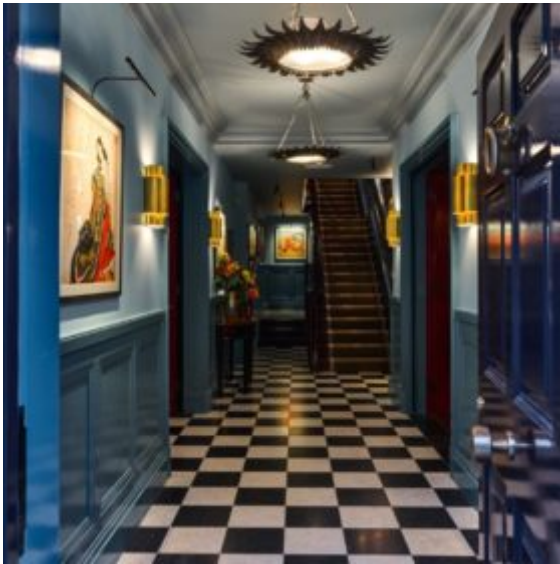
Omakase



Sir Frank's Bar



The Library - Host Area



Entrance Hallway



The Haymarket



The Butterfly Room



The Courtyard

