

MASONROSE

Airelles Château de Versailles, Le Grand Contrôle



Airelles Château de Versailles, Le Grand Contrôle

KEY FACTS

Tipped to be one of the most sought-after addresses in the world, Le Grand Contrôle is the first hotel to open within the grounds of the iconic Château de Versailles with views over the Orangerie, the Pièce d'Eau des Suisses and the Château. Guests can take an exclusive peek into the enchanting world of Versailles, exploring the 2,000-acre gardens and palace halls and apartments as walked by Europe's elite over the centuries.

The hotel is housed within three historic buildings: Le Grand Contrôle, Le Petit Contrôle and the Pavillon des première cent marches, built in 1681 by Louis XIV's favourite architect, Jules-Hardouin Mansart. The property has recently been meticulously restored by architect and interior designer, Christophe Tollemer to reveal 14 regal rooms and suites, each of which are named after prominent individuals who had a strong association with Le Grand Contrôle or the Palace of Versailles. Larger suites are located on the lower floors, including a 120 sq.m Signature Suite, complete with four poster bed, striking chandelier, spacious bathroom with views onto the Orangerie garden and a generous living area. On the first floor is The Grand Salon providing an inspiring place to relax, read a book or simply take in the majestic 18th century surroundings.

At the heart of the guest experience is the aristocratic culinary offering provided by the internationally-acclaimed chef, Alain Ducasse. With 20 Michelin stars to his name, Ducasse takes guests on a journey through time experiencing gastronomic delights from both past and present via a tantalising menu inspired by the flamboyant nature of Louis XIV's meals.

Guests can relax in a truly regal fashion in the tranquil surroundings of the Valmont spa, featuring a hand-painted fresco and Carrara marble checkerboard floor, directly inspired by the Palace's marble courtyard. It features an indoor pool, Hammam, sauna and a restorative programme of spa treatments from Swiss skincare experts Valmont.

Airelles has curated a number of exclusive experiences, providing access to areas of the Château and grounds that are normally closed to visitors. There are also boats and golf carts on hand to explore the Grand Canal and gardens at leisure. Each stay includes a private tour of The Trianon, the Château and unlimited access to the Orangerie Gardens. There are also a selection of incredible paid-for experiences available including after-hours access to the Hall of Mirrors, a Marie Antoinette-themed day including a costume fitting, a private performance at the Royal Opera, private dining with a string quartet in the former apartment of Louis XV's daughters and the chance to follow in the footsteps of former head gardener to the royals, André Le Nôtre.

LOCATION AND ACCESS

To reach Le Grand Contrôle by car: 45 minutes from the centre of Paris | 45 minutes from Gare du Nord

To reach Le Grand Contrôle by train: 10 minutes walking distance from Gare de Versailles Château Rive Gauche (45 minutes to Paris Notre-Dame) | 20 minutes walking distance from Gare de Versailles Chantiers (35 minutes to Paris Gare Montparnasse)

To reach Le Grand Contrôle by plane: 30 minutes from Paris Orly Airport | 60 minutes from Paris Charles de Gaulle Airport

To reach Le Grand Contrôle by Helicopter: 5 minutes from Aerodrome Saint Cyr L'Ecole (15 minutes to Paris Balard metro terminus line 8)

ACCOMMODATION

14 rooms and suites in total, including:

Rooms: Orry, Calonne, Rose Bertin, Jules Hardouin-Mansart, Orangery and Madame De Fouquet

Junior Suites: Baron De Staël-Holstein and Turgot

Premier Suites: Paul De Beauvilliers and Loménie De Brienne

Signature Suites: Madame De Fouquet, Madame De Staël and Necker

Decorated individually in an elegant eighteenth-century style, the rooms feature authentic colours and fabrics, chandeliers, artwork and artefacts including a love letter from Madame De Staël to her lover Louis, Comte de Narbonne-Lara.

FACILITIES

Ducasse at Château de Versailles, Le Grand Contrôle: With uninterrupted views onto the Orangery parterre, the restaurant serves a selection of reimagined French classics during the day along with a dedicated Marie Antoinette afternoon tea. Dinner is a more theatrical affair, reminiscent of the King's royal banquets, with the restaurant team in period costume serving an array of gold, silver or vermeil dome-covered dishes. A bell rings at 8:30pm to signal the beginning of dinner, where guests experience a five-course gourmet feast commencing with a selection of soups and starters followed by roasts and salads, then dessert and finally, fruit. Each Sunday a royal brunch is served, directly inspired by 'Le Grand Couvert', an ancient French ritual where the king and queen would

dine in front of the public. An impressive buffet takes centre stage resplendent with classic dishes and seasonal ingredients, as well as some dishes being served directly to the table. A highlight is the King's Soup in a nod to the past.

Valmont Spa: features a 15-metre indoor swimming pool, Hamman, sauna and spa treatments from Valmont. A signature 90-minute Majestic Mirror facial treatment has been developed especially for Le Grand Contrôle, designed to nourish and sculpt the face and décolleté. The treatment includes the trademark Valmont regenerating collagen mask treatment.

PRIVATE ROOMS

Le Grand Contrôle provides the most glamorous of backdrops for private events including intimate weddings, private dinners and exclusive launches, for up to 54 guests. For the ultimate wow factor, there is also the option of hosting an event inside the Palace itself followed by an exclusive overnight takeover, accommodating up to 36 guests across the 14 rooms and suites.

DID YOU KNOW?

The property is largely furnished with original period furniture and Tollemer worked closely with Emmanuelle Vidal-Delagneau, a highly experienced specialist in French heritage and art in the selection of authentic art and objects from the seventeenth and eighteenth centuries. As well as Vidal-Delagneau, a number of highly-respected French artisans and craftspeople were commissioned to restore and recreate the many historical features, including parquet flooring, fabrics, stonework and wood panelling. The prestigious Maison Pierre Frey has created

period wall hangings for each room, displaying original designs taken from the Château archives. Themes include flowers and butterflies characteristic of the 'return to nature' advocated by philosopher Jean-Jacques Rousseau.

The opening of Le Grand Contrôle marks the seventh property for the prestigious hotel collection which comprises Les Airelles in Courchevel, La Bastide in Gordes, Mademoiselle in Val d'Isère and Château de la Messardière and Pan Dei Palais in Saint-Tropez.



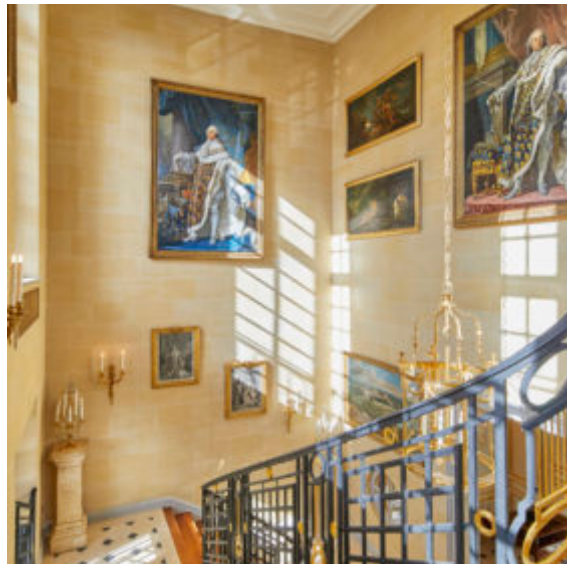
Hotel view of the gardens



Baron de Staël Holstein room



Lobby seating area



Main interior staircase



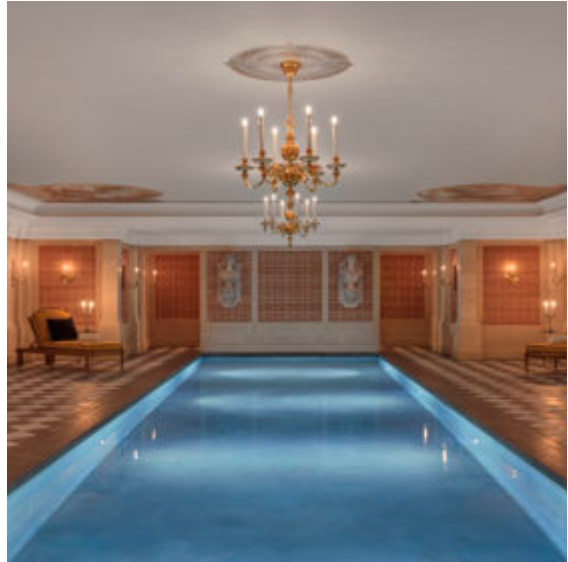
Restaurant Grand Cabinet



Hardouin-Mansart room



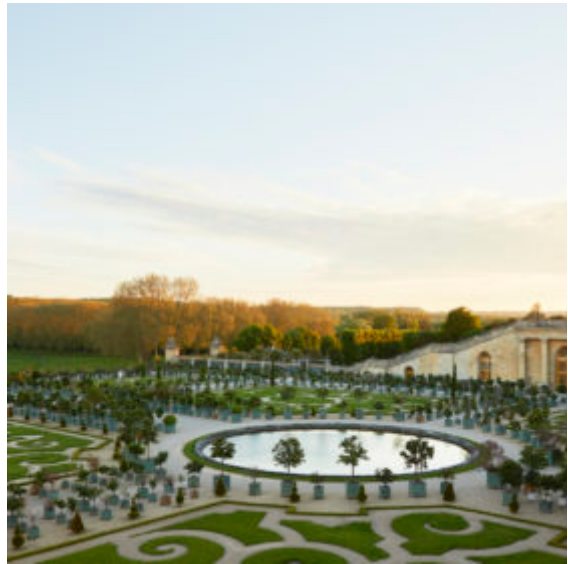
Madame de Staël bathroom



Spa pool



Suite Necker



Orangery gardens

