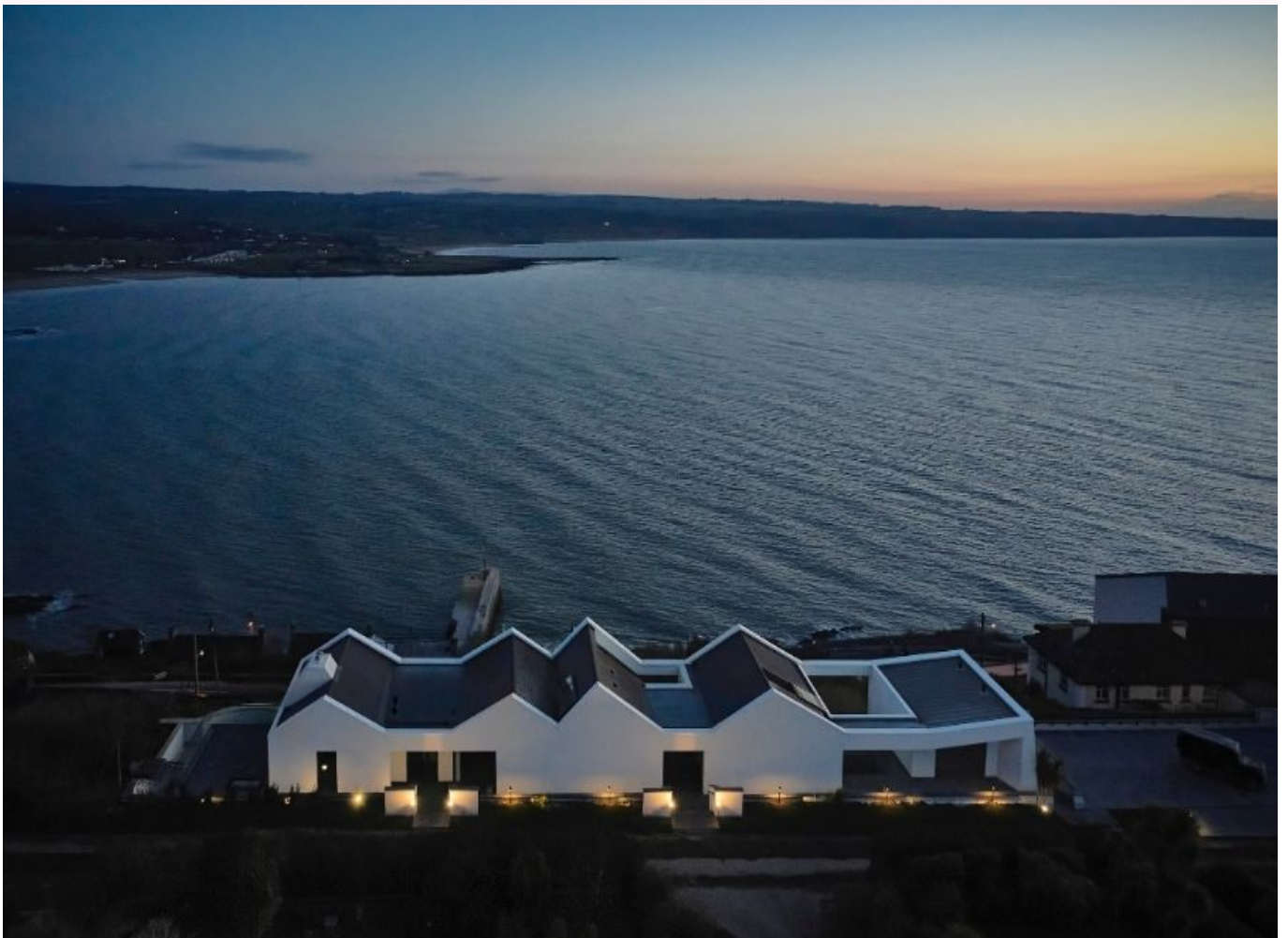


MASONROSE

Cliff Beach House, Ardmore Bay

---



## Cliff Beach House, Ardmore Bay

---

### KEY FACTS

Cliff Beach House is a new private house rental, offering some of the most luxurious, contemporary-styled accommodation in Ireland. This modern, architect-designed home is located in scenic, sleepy Ardmore Bay on the southeast coast, set above rolling Atlantic waters. The striking six-bedroom villa is finished to the highest level, with spectacular floor-to-ceiling windows to take in the Irish skies, village and cliffside views.

It was designed for groups of friends or multigenerational families looking for an exceptional immersive experience with all modern comforts and facilities. This two-storey home is new for Ireland: not just for its exceptional contemporary design — cast to make the most of the Irish light and ocean views — but for its holistic approach to service.

Created by the experienced Irish hotelier team behind the acclaimed *Cliff House Hotel*, Cliff at Lyons and Cliff Townhouse, the house offers award-winning service, including access to multi-Michelin-starred chefs. A dedicated House Host can arrange bespoke cultural trips, nature and wildlife adventures and zero-km cooking

classes: opening up this region's rich literature, art, music and culinary traditions in the most genuine and heartfelt ways.

High-pitched ceilings in the dining room and two living rooms open up through floor-to-ceiling glass to this private rental's long stone patio. Paths lead out through naturalistic gardens planted with sea air-loving shrubs, and then slip down into the village, and the heart of the arty, local community. Beside the kitchen, there is a sun-bowl which catches the last of the rays and an outdoor hot tub on the terrace provides a dramatic, warming counterpoint to the great outdoors.

This house was designed to enhance the natural flow of light and to complement modern lifestyles. There is space to come together, as well as plenty room to relax in peace and quiet. Guests can graze solo at the breakfast counter after returning from a morning run on the headland, share a feast in front of the fireplace at the 18 foot-long oak dining table, stretch and steam in the gym, cuddle down for an afternoon of games and scones in the family snug or screen the highlights of their stay in the cinema room.

### LOCATION AND ACCESS

From Dublin (airport): 240km / 2.5 hours by car

From Cork (airport): 60km / 1 hour by car

From Waterford: 70km / 50 minutes by car

From Rosslare (ferry): 140 km / 1 hour 45 minutes by car

**Airlines flying direct from the UK to Dublin:** Aer Lingus, British Airways, Ryanair, American Airlines, Air Canada, Etihad Airlines, Qatar, Japan Airlines, Stobart Air

### ACCOMMODATION

Six double, ensuite bedrooms with floor-to-ceiling glass windows overlooking the sea. The uncluttered design is serene, calming and luxurious — all of the bedrooms imagined in similar size and style, except for the master with its remarkable bathroom, complete with its own fireplace.

Ocean-green resin floors, copper lighting, pale walls, dark woods and slates give the feeling of being immersed in the natural landscape. Headboards are buttoned velvets. Fires burn with natural woods. Sheets are the finest cottons. Every texture has been thought through, and every comfort, from underfloor heating to the specially-

commissioned bedside lighting. The contemporary aesthetic is complemented with plenty of locally-crafted details, botanical prints, original ceramics and hand-

loomed Irish blankets to inspire curiosity as well as add warmth and cosiness.

## FACILITIES

Six double ensuite bedrooms  
Dining room with 18ft table  
Kitchen and breakfast nook  
Lounge and music room  
Cinema room  
Private sauna  
Hot tub with sea views  
Home-gym equipped with handcrafted NOHRD  
WaterRower, solid wood and leather free weights and  
Flowstate yoga mats, designed by Dublin based artist  
Maser  
A fern-filled interior garden and outdoor garden and sun  
terraces  
Parking for up to six cars

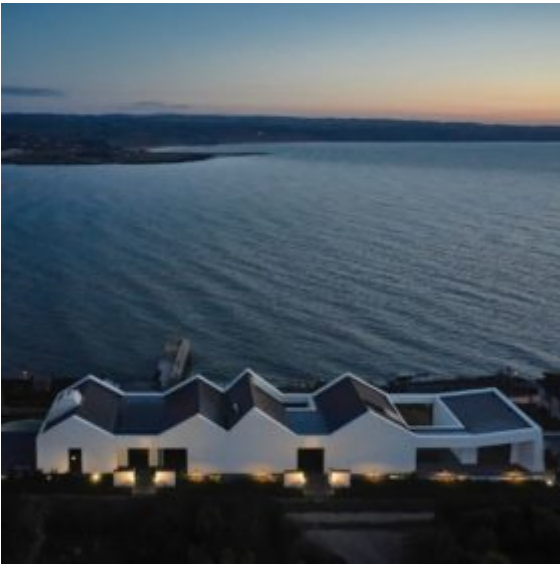
A dedicated team at Cliff Beach House can arrange lots of engaging things to do: foraging, sea otter spotting, whale walks (the season starts in the Autumn) and wild hiking, and they also have a little black book of fascinating local experts to teach everything from writing poetry, botanical painting to how to make the perfect soda bread.

The Cliff House Hotel, who owns and services the new beachhouse, has just announced a talented new Irish chef: Ian Doyle - who cut his teeth at Noma in Copenhagen and at the groundbreaking Oaxen Krog in Stockholm. He uses Irish land, history and culture as the foundations for his cooking and can come to the beach house to cook for, and with, guests.

## DID YOU KNOW?

The high-design, contemporary beach house is brand new and has just opened. It is very unusual for Ireland, as it is sleek, airy and at-one with nature - with endless sea views. Most other rental houses are typically historic.

As well as the fresh design showcasing Irish art and craftsmanship, it also fits the deep need for more inspirational, meaningful and interactive travel, as the house is deeply connected into to local community.



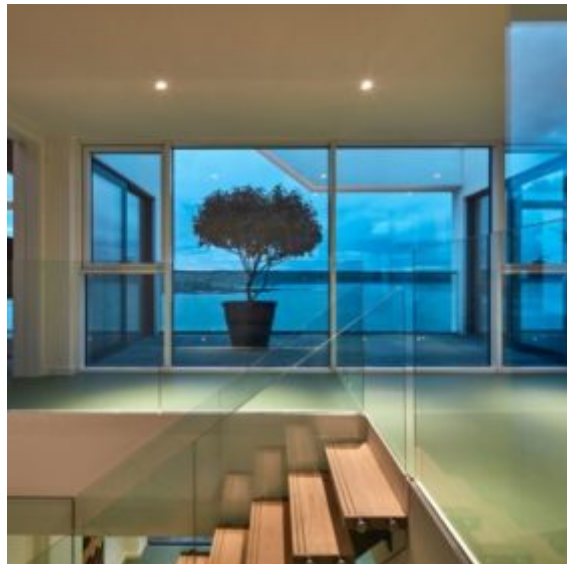
View over Ardmore Bay



Entrance with bespoke copper door



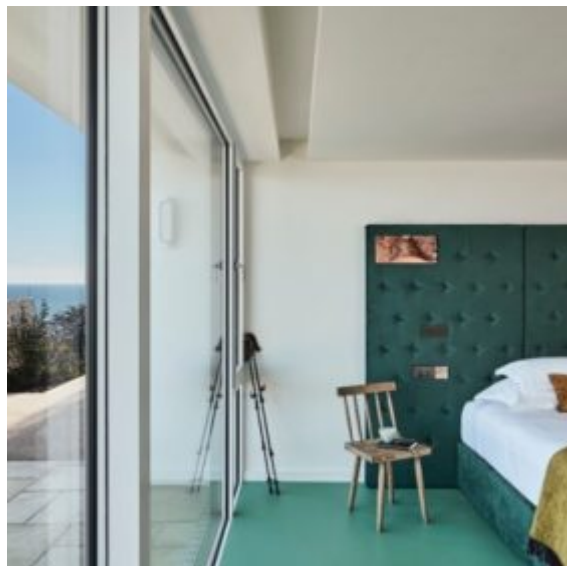
The music room and lounge



Full length windows look out over the sea



Dining room with 18 ft table



Six bedrooms featuring Irish craftsmanship



Indoor fern garden



Cliff Beach House and the Cliff Hotel below



Bathrooms also have sea views



Yoga terrace, sauna and gym

