

MASONROSE

## Dunalastair Hotel Suites, Kinloch Rannoch

---



## Dunalastair Hotel Suites, Kinloch Rannoch

---

### KEY FACTS

Housed in a Victorian stone building, Dunalastair Hotel Suite elegantly marries old and new with carefully restored original features and contemporary fittings in calming tones, interspersed with gentle hints of local heritage, such as stag antler chandeliers and stained glass windows.

Kinloch Rannoch is in the centre of the Scottish Highlands, close to the highland towns of Aberfeldy and Pitlochry and is well positioned for a breathtaking holiday with an abundance of activities on offer for those pursuing adventure, spectacular scenery or simply wishing to relax and unwind. Inverness and Edinburgh airports are just a two hour drive away, arrival by helicopter is also possible. If arriving by train head for the pictureque Rannoch Station, 30 minutes from the hotel or Pitlochry 40 minutes by car.

Explorers itching for the great outdoors can escape among the rolling natural surrounds right from the front door with hiking and biking tours among the mountains, open water fishing for brown trout, perch, pike and arctic char on Loch Rannoch, off-road driving trails, falconry lessons and Land Rover safaris exploring Perthshire's wealth of wildlife. History buffs, meanwhile, can delve into local legend by

visiting the 700-year-old Blair Castle, embarking on the fascinating Clans of Rannoch Trail, or taking a trip to the mythical Schiehallion "Fairy Hill".

For weddings, larger reunions and events, Dunalastair Hotel Suites also offers exclusive hire of the property, as well as use of indoor and outdoor private spaces (such as the newly created Library for intimate dinners and celebrations) with a dedicated team on-hand to organise fun group activities, including customised Highland Games tournaments.

The hotel team also supports neighbouring independent business, The Shed Gallery, with an eye-catching collection of Scottish landscape photography captured by its resident creatives. Colour schemes across the 32 individually-designed rooms and suites also give a subtle wink to the view outside: either a snapshot of the inky Loch, or a mountain panorama stretching towards Glencoe. The hotel offers inventive packages incorporating suite accommodation with beautiful views across the striking landscape - recognisable from hit TV series, *Outlander* - full Scottish breakfasts and gourmet dinners showcasing locally sourced seasonal fare for all dietary needs at Edina's restaurant.

### ACCOMMODATION

32 Rooms and Suites provide contemporary relaxation with comfortable beds, elegant en-suite bathrooms complete with bathrobes, slippers and complimentary White Company toiletries, and a full range of services including free WIFI.

### FACILITIES

Edina's Restaurant offers breakfast, lunch and dinner, as well as a variety of light bites. The menu, includes hearty meals prepared from fresh, locally sourced produce, delicious, traditional Scottish dishes, and quick snacks for those on the go, as well as a lounge area in which to relax, and enjoy a coffee or two.



View of Loch Kinloch



Grand staircase



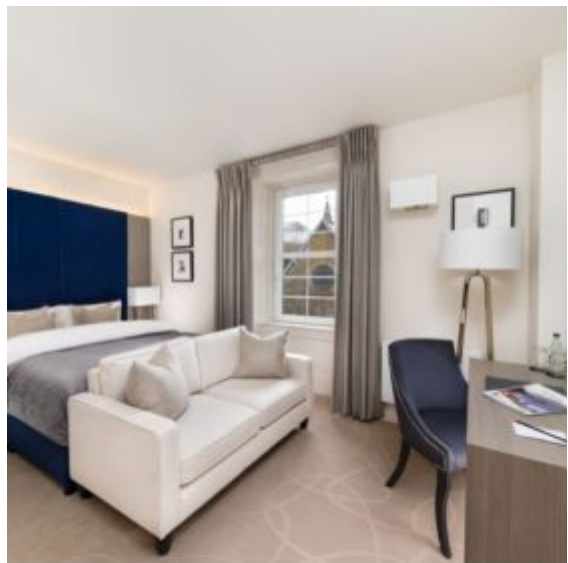
Stylish lounge



Courtyard and outdoor terrace



Edina's restaurant



Simply elegant rooms





All modern comforts



Weddings



Meetings and away days



Country pursuits and activities

