

MASONROSE

Hotel Bellevue, Dubrovnik



Hotel Bellevue, Dubrovnik

KEY FACTS

Hotel Bellevue will be closed for a complete interior refurbishment from 1st November 2018 until the end of April 2019. The newly redesigned five star boutique hotel will be a state-of-the-art seaside retreat around the bay from Dubrovnik's magnificent 6th century Old Town.

Hotel Bellevue was proclaimed one of "Europe's coolest new hotels" by The Sunday Times

The hotel is situated on a cliff 30 metres above the Miramare bay, with floor-to-ceiling windows offering splendid views of the vast Adriatic and overlooking a charming pebble beach. Located in the heart of Dubrovnik,

it is just a pleasant 10 minute walk from the historical town centre, protected by UNESCO.

The hotel offers two unique restaurants offering international, traditional Dalmatian and contemporary Mediterranean cuisine, and a stylish lounge bar for light bites and drinks with magnificent sea views

Treatments at the Energy Clinic Spa combine luxurious and traditional European methods with the philosophy and techniques of Chinese medicine, creating the perfect balance of East meets West; these include massages, body rituals, scrubs and baths

LOCATION AND ACCESS

Beach front: 10 min by foot to the city centre

Dubrovnik Airport: 20 km, 30 min by car

Split Airport: 245 km, 3 hr 30 min by car

Flight time from the UK: 2 hr 40 min

Direct flights from the UK and Ireland: British Airways, easyJet, Ryanair Norwegian Air, Thomson Airlines, Aer Lingus, Jet2

ACCOMMODATION

91 rooms in total, including:

23 Classic Sea View Rooms- king size bed, en-suite bathrooms, many with sea views

46 Superior Rooms- king size bed, en-suite bathrooms, balcony with sea views over Miramare Bay

8 Deluxe Rooms- king size bed, en-suite bathrooms, living room area, balcony with sea views over Miramare Bay

10 Executive Suites- one bedroom, one bathroom, living room, balcony with sea views over Miramare Bay

3 Deluxe Suites- one bedroom, two bathrooms, including one ensuite, living room, balcony with sea views over Miramare Bay

1 Lovor (Presidential) Suite- one bedroom, two bathrooms including one en-suite, living and dining rooms, balcony with sea views over Miramare Bay. The suite can be booked by itself or as a private floor with additional connecting and adjoining guest rooms.

FACILITIES

Vapor: à la carte restaurant offering the most refined Mediterranean delicacies, inspired by the region

Nevera Beach Restaurant: offers the best of Dalmatian and Mediterranean cuisine, with the unique experience of outdoor dining within a man-made cave overlooking the beach

Spice Lounge: a world-class bar offering Viennese coffee specialities and pastries, as well as fine wines, local vintages, and champagnes. Enjoy the quintessential Bellevue experience with a chilled freshly prepared cocktail, while watching the sunset over Miramare Bay

Romantic wedding venue space, suitable for smaller

parties of up to 30 people, with an on-site event planner

Energy Clinic Spa: 500 sq.m spa and wellness area consisting of an indoor swimming pool and Jacuzzi whirlpool overlooking the bay, relaxation zone, 3 treatments rooms, steam room and Finnish sauna and theme showers with hot/cold experience

Fitness studio: with state-of-the-art cardio and strength equipment

Intimate pebble beach

Souvenir and gift shop

Car rental can be arranged

PRIVATE ROOMS

Meetings for up to 200, cocktail receptions for up to 240

| | Cocktails | Theatre Classroom | Receptions |
|-----------|-----------|-------------------|------------|
| Miramare | 200 | 140 | 80 |
| Boardroom | 80 | 90 | 48 |
| TV Lounge | 20 | 30 | 20 |

DID YOU KNOW?

Adriatic Luxury Hotels, in partnership with one of the finest wineries from the Pelješac region (Skaramuč a family winery), have selected a premium plot to grow a limited variety of Plavac Mali grape to create a special Dingač Reserve 2010 (Limited Vintage), which is exclusively sold at their hotels and villas.

Hotel Bellevue is one of the few hotels in Dubrovnik with exclusive access to a pebble beach with sunbeds.

Treatments at the Energy Clinic Spa combine luxurious and traditional European methods with the philosophy and techniques of Chinese medicine, creating the perfect balance of East meets West; these include massages, body rituals, scrubs and baths. Guests can also enhance their energy naturally and holistically through the unusual combination of energy-inspired beauty products, treatments and services. Featuring panoramic sea views, the spa provides the perfect place to relax and re-energise.

Fine-dining restaurant Vapor overseen by Executive Chef Saša Računica is reputedly known as one of the finest restaurants in the city, offering a peaceful and intimate setting with sea views from both the interior and spacious terrace. Računica has created a unique new style of regional cooking by using Mediterranean ingredients as the essence of flavours, along with elements of international cuisine. Guests can savour the seven-course Degustation set menu for the full experience.

The stylish Spice Lounge is an exotic space with floor to ceiling windows and features a huge palm tree, known as Noah, that divides the bar in two and reaches all the way up to the hotel's reception and front desk areas on the next floor.

The hotel can arrange cultural tours, island cruises, scuba diving, motor and sail boats, private yacht excursions, water sports, panorama flights, horse-riding and more.



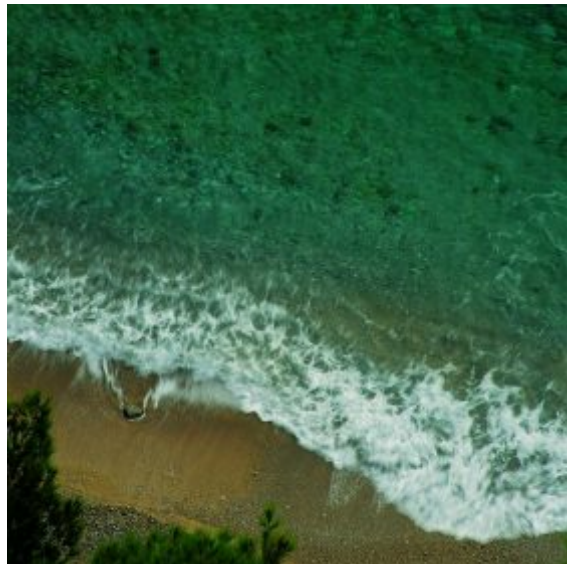
Bellevue Wellness



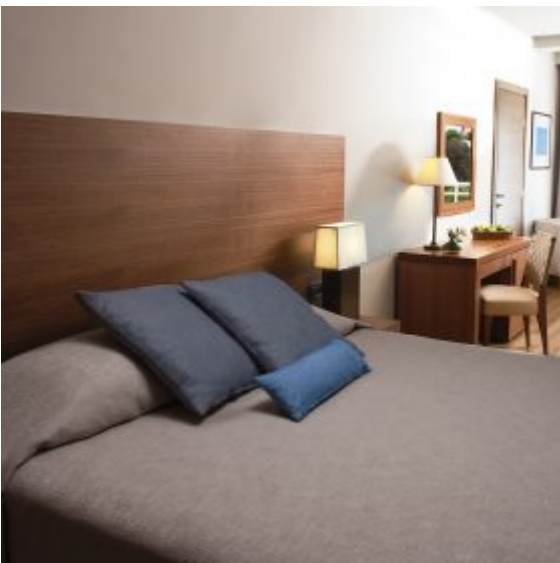
Suite



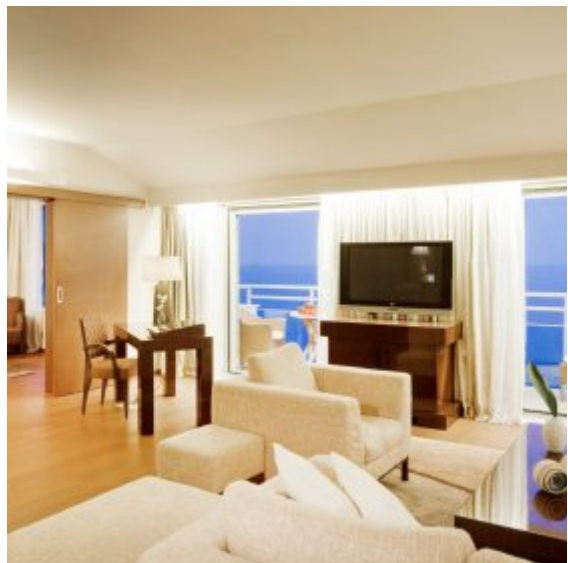
Beach Restaurant



Hotel Bellevue Beach



Deluxe Room



Presidential Suite



Hotel View from Beach



Hotel Exterior



Breakfast in Bed



Wellness Area

