

MASONROSE

AlmaLusa Baixa/Chiado, Lisbon



AlmaLusa Baixa/Chiado, Lisbon

KEY FACTS

AlmaLusa Baixa/Chiado is set in a renovated 18th century building tucked away in the corner of the historic Praça do Município. Due to the hotel's central location, guests are within easy walking distance from the Tagus River, famous attractions such as Castelo de São Jorge and the Sé de Lisboa, as well as the lively Fado bars of Alfama. The dedicated concierge team can organise exceptional day trips, guided tours and other inspirational experiences for guests to discover the best of Lisbon and the surrounding areas.

With all products and decorations throughout the rooms and the hotel itself created by local artisans and designers, AlmaLusa Baixa/Chiado is a true showcase of Portuguese design and style. From the Colmol beds, Castelbel bath amenities and bath towels from Lima Mayer to the pastel coloured tableware from Ceramicas Na Linha and local gastronomy and wines - all are sourced from the finest Portuguese producers.

This charming hotel seamlessly blends traditional

Portuguese features and craftsmanship with chic, contemporary design. The 18th century building is bursting at the seams with original features. Moss-green tiles line the wooden staircase, whilst weathered flagstones and vault-style concrete walls frame the reception area. The hotel's listed building status means that all of the 28 rooms are unique and feature authentic elements including original flagstones floors, colourful tiles and fireplaces - all of which have been skilfully incorporated by the owner.

Enhancing the Baixa and Chiado neighborhoods' already trendy dining scene is the relaxed 60-cover Delfina restaurant, a name that translates rather adeptly to 'A fine Portuguese deli'. The menu celebrates regional cuisine, with chefs using fresh, seasonal ingredients from the Mediterranean larder to craft moreish dishes. The restaurant features soft pink chairs, pastel coloured tableware and an alfresco dining area on the cobbled terrace that's always filled with a mixture of locals and guests.

LOCATION AND ACCESS

Address: Praça do Município 21, 1100-365 Lisbon, Portugal

Terreiro do Paço square, Baixa and Chiado neighbourhoods and the Tagus riverside are two minutes away - the perfect place for a run, a cycling tour or a morning stroll.

Buses, trams, taxis and city bikes are all easily accessible from the hotel.

Lisbon airport: 9.4km, 20 minute drive

Flight time from the UK: 2 hr 35 min

Airlines flying from the UK: easyJet, TAP Air Portugal, British Airways

ACCOMMODATION

28 rooms and suites including:

8 Standard Rooms: 20 - 25 sq.m, king or twin

bed, interior patio view

4 Mini Deluxe Rooms: 20 sq.m, king or twin beds, view of the Município square through 'Pombalino' style windows

4 Deluxe Rooms: 25 sq.m, king or twin beds, view of the Município square through 'Pombalino' style windows

4 Triple Rooms: 37 sq.m, spacious room with a king or twin bed and a third bed, seating area, faces the famous 28 tramway route and one of the busiest streets of the city

4 Junior Suites: 32 sq.m, king or twin bed, seating and dining area, in-room kitchenette with Electrolux microwave, dishwasher and fridge, great views over Lisbon's Município Square

4 Deluxe Suites: 43 sq.m, the most spacious and comfortable suite category of the hotel with large and bright windows, king or twin bed, dining area, in-room kitchenette with Electrolux microwave, dishwasher and fridge, great views over Lisbon's Município Square

Every room provides heavenly luxury King or Twin beds with Colmol Spa Premium mattresses, high speed Wifi, REVO Supersignal radios, safes and Delta coffee and tea machines. Bathrooms feature power showers by Sanindusa, Castebel skincare products and towels by Lima Mayer. Guests received a complimentary 4G smartphone for the duration of their stay, with 30 minutes of international call allowance per day and internet. The AlmaLusa App provides guests with recommendations, restaurants reservations, taxi contacts and more.

An extra bed in suites, cot, pillow menu and laundry and dry cleaning are available on request.

FACILITIES

Delfina restaurant: A fine Portuguese deli offering all-day dining both indoor and al-fresco on the terrace by the Town Hall square - an ideal spot to socialise, work or relax. Fresh and seasonal Portuguese-inspired brasserie-style cuisine is served in an informal and relaxed atmosphere, alongside fabulous local wines. Guests can enjoy tapas and aperitifs, traditional home-made style food and classic Portuguese dishes, sandwiches, salads and desserts.

Baby sitting service available on request

Retail area selling authentic souvenirs, world-class Castelbel products and exclusive AlmaLusa items.

DID YOU KNOW?

AlmaLusa has been voted 'one of the top 101 best hotels in the world' by Tatler

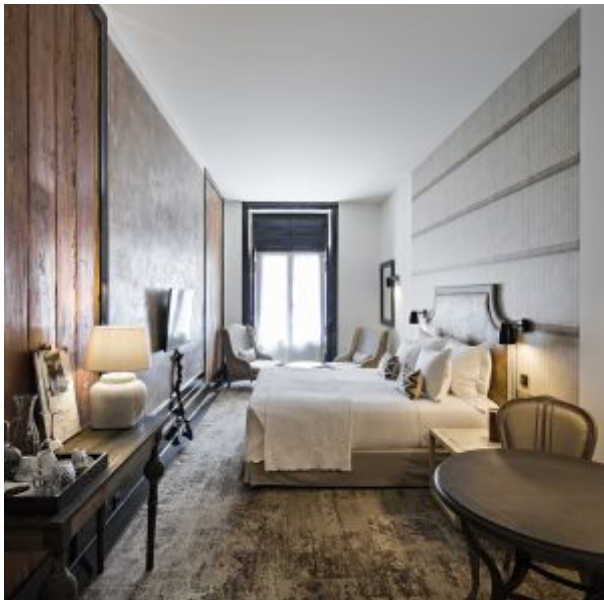
AlmaLusa Baixa/Chiado is situated in the historic square where Lisbon's royal palace once stood and where the plans for Portugal's maritime exploration were born in the 15th century. The hotel's 18th-century building was home to Lisbon's arsenal, where weapons and cannons were constructed and stored for distribution on Portuguese explorers' ships.

AlmaLusa Baixa/Chiado is a convenient location for guests to discover Lisbon from. The hotel is just a stone's throw

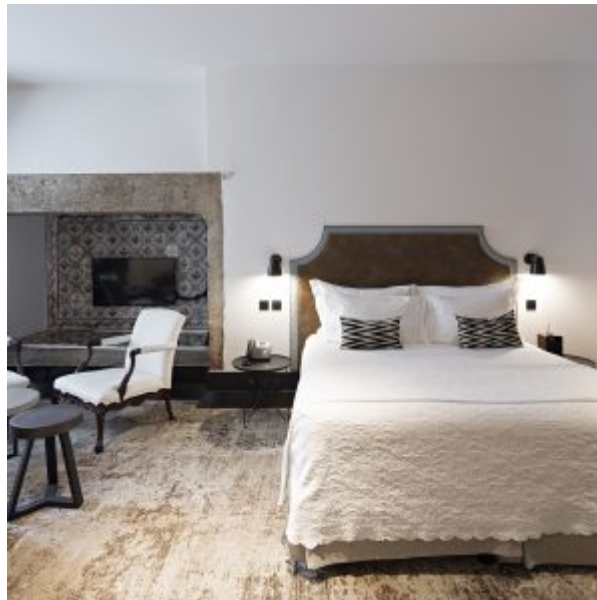
from the Tagus River, a superb spot for a morning jog or a sundown stroll. Headline attractions such as Castelo de São Jorge and the Sé de Lisboa as well as the atmosphere-laden fado bars of Alfama are just a short walk away. The hotel's concierge team can direct guests to the best spots in the city, always aiming to offer new and inspirational suggestions.

AlmaLusa has an excellent partnership with the most important winemaker in the country, Sogrape, which supply the hotel with a selection of wines including some delicious Port wines.

Castelbel is a Portuguese manufacturer of high-quality bath, body and home scented products, carefully handcrafted according to traditional methods.



Deluxe Suite



Junior Suite



Reception



Delfina Restaurant



Triple Room



Terrace and view of the Square



Delfina Restaurant cuisine



Interior public area



