

MASONROSE

Masseria Trapanà, Puglia



Masseria Trapanà, Puglia

KEY FACTS

Opened in October 2015, Masseria Trapanà offers guests a luxury boutique escape just outside the historic city of Lecce

Owner Rob Potter-Sanders has completely renovated the 16th Century country farmhouse, uncovering frescoes and historical artefacts along the way, to bring a sense of authenticity and character to the building

The property boasts just nine stylish suites set amongst six gardens, a pool and bijou chapel

Taking inspiration from Rob's travels to Thailand and Bali, many of the suites have their own outdoor bathroom and private garden or terrace. The hotel's interiors combine high-end quality materials with chic and seamless design

Set amongst 60 hectares of citrus and olive groves, the property takes inspiration from these local surroundings and offers guests delectable 'Cucina Povera' with a twist

LOCATION AND ACCESS

Brindisi Airport: 39 km / 30 min

Bari Airport: 160km / 1 hr 35 min

Lecce town: 10 min by car

The hotel provides transfers to/from Brindisi Airport: €70 per person (approx. £50)

Flight time from the UK: 2 hr 45 min

Airlines flying from the UK: British Airways, EasyJet, Ryanair

ACCOMMODATION

Nine individually designed stylish suites, each with a 2m x 2m four poster bed and an en-suite bathroom opening out into a private garden or terrace

FACILITIES

Main courtyard, featuring a bijou chapel with restored 6th century frescoes

Six walled gardens

Swimming pool with sunbeds

The Terrace, surrounded by lemon trees, is where

breakfast is served. Lunch or dinner is available upon request

Daily complimentary transfer to Lecce each evening

Massages and yoga are available on request

Wifi available throughout the masseria and gardens

Bikes are available for guests to explore the local area

PRIVATE ROOMS

DID YOU KNOW?

The masseria (a fortified farmhouse) dates back to 700 – 1500 AD and has not been touched in 200 years, so its transformation into a boutique hotel has been a true restoration

The masseria is built from the natural Tuffo and Pietra Leccese stone (better known as sandstone or limestone) and features large vaulted ceilings in natural stone with a natural colour palette

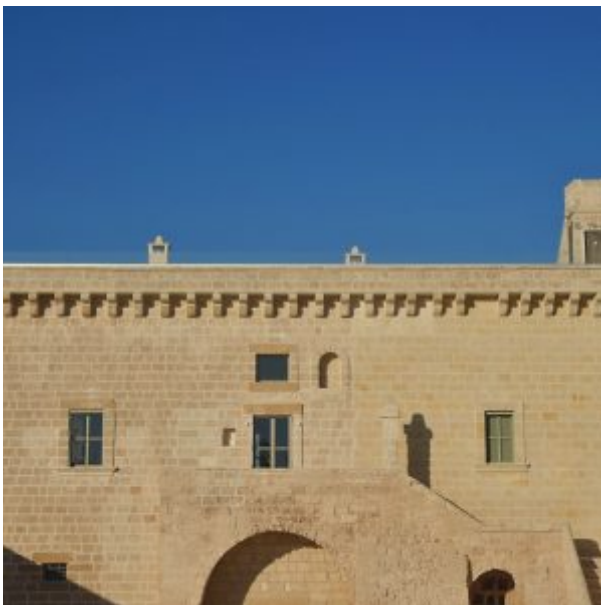
Every piece of furniture in the hotel has been individually designed using 40 different companies. The modern four poster beds in each suite are designed using iron and the linen has been custom-made

Underneath the main courtyard is a Frantolio, which is where the farmhouse originally pressed olives. It was hand carved around the 6th century and remains in its original condition

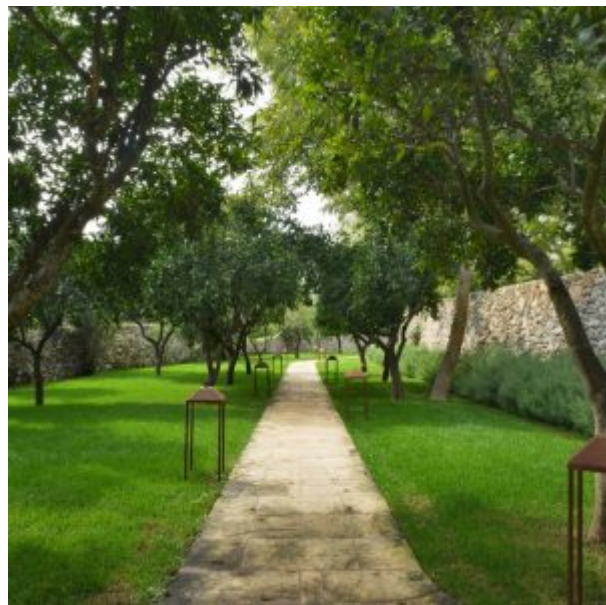
Masseria Trapanà offers a daily changing menu with unique dishes based on Cucina Povera, which Puglia is famous for

The ‘infinity style’ gardens with 500 trees are home to 19 types of fruit and nuts including lemons, blood oranges, oranges, mandarins, pomegranate and walnuts

Hammocks have been placed in secret spots within the gardens for guests to use



Exterior



Gardens



Trapana South Suite



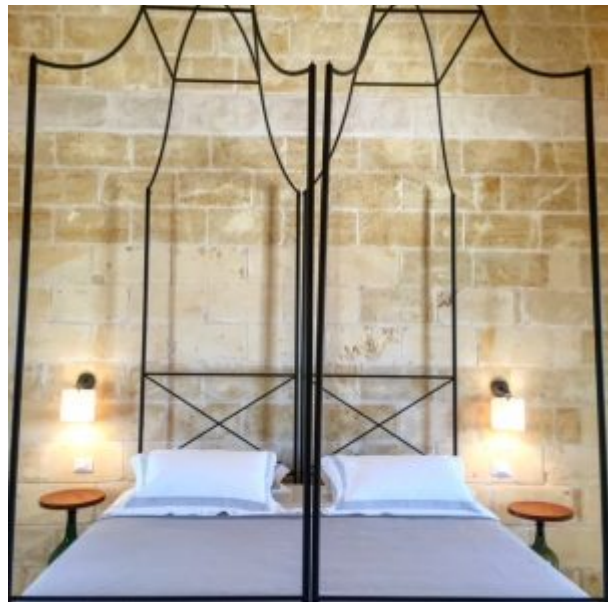
Swimming Pool



Guest Bathroom



Trapana Suite



Communal Lounge



Swimming Pool

Brown Suite



Reception

